

Instructions for HotFix_627753.exe

The instructions in this document apply to HotFix_627753.exe, which is intended to correct the problems caused by the following two SPRs:

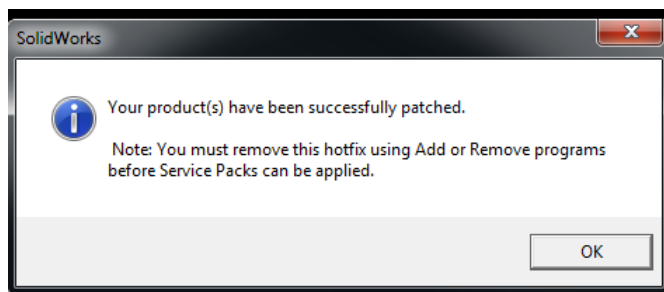
SPR 627126 (Toolbox data upgraded on an operating system that uses commas as the decimal symbol will result in unusable Toolbox parts.) For more information on this SPR, please see Knowledge Base Solution [S-056855](#).

SPR 627178 (Toolbox customized part numbers and descriptions are no longer displayed after upgrading to SolidWorks 2012.) For more information on this SPR, please see Knowledge Base Solution [S-056856](#).

If you have an existing 2012 SP0.0 Toolbox installation already impacted by either problem, please take the following steps:

1. Download the file HotFix_627753.exe from any of the following KB Solutions: [S-056855](#), [S-056856](#), or [S-056921](#).
2. We recommend that you make a backup copy of your Toolbox data folder before applying the Hotfix. Do not store that backup under the Toolbox data folder.
3. Open SolidWorks 2012 SP0.0 on any computer where it is already installed, and ensure that "Tools>Options>System Options>Hole Wizard/Toolbox folder location" is pointing to the folder location of the Toolbox data that needs to be corrected.
4. Exit the SolidWorks System Options interface.
5. Close SolidWorks 2012 SP0.0.
6. Run HotFix_627753.exe by double-clicking the executable file. The file will first extract to C:\swdist\hotfix by default. After the extraction is complete, "hotfix.exe" will run. While "hotfix.exe" is running, the user should see a command-line window that says "Installing Hotfix. Please do NOT close this window." The hotfix can take several minutes to complete depending on the speed of the computer being used.

The Hotfix installation is complete once you see the following message:



7. After the Hotfix has completed its activity, start SolidWorks 2012 SP0.0 and examine the behavior of your Toolbox dataset. If the problems described in SPR 627126 and 627178 are not corrected, or if you have difficulty applying the Hotfix, you will need to contact your SolidWorks Reseller's Technical Support team for further assistance.

Additional notes:

- If you have not yet updated to 2012 SP0.0, but would be impacted by the SPRs outlined above, you should plan to execute the Hotfix steps outlined above immediately after updating to SP0.0, **OR** delay upgrading to 2012 until SP1.0 is available for download mid-November.
- For multiuser environments where users are sharing one common Toolbox data set, the Hotfix installation only needs to be done from one user's machine pointing to the shared Toolbox.
- **For the Hotfix to correct some of the Toolbox components, they had to be re-upgraded from the previous major version. For fasteners needing this level of correction, the Toolbox Settings for the component will revert back to the pre-2012 state.**